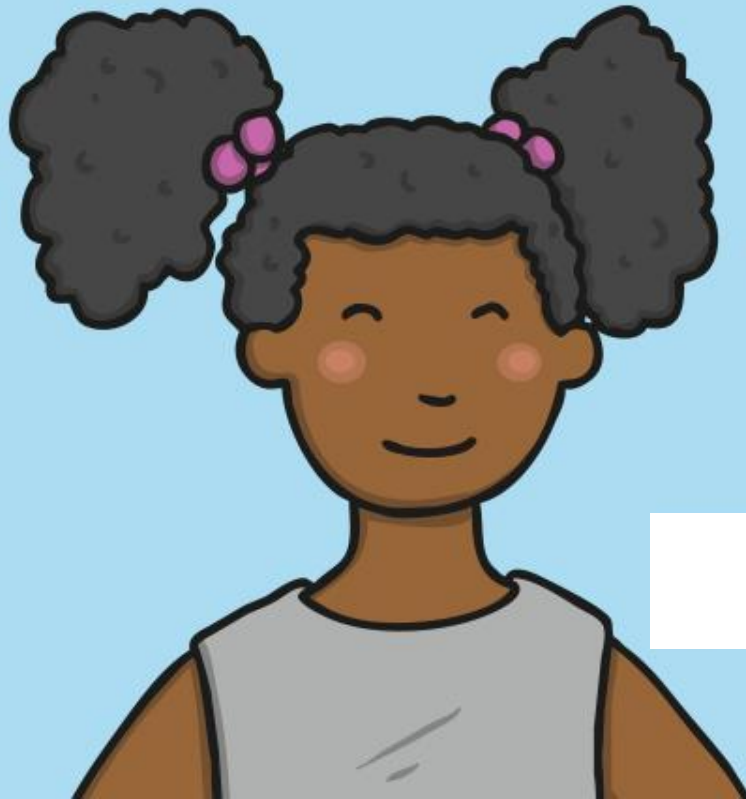
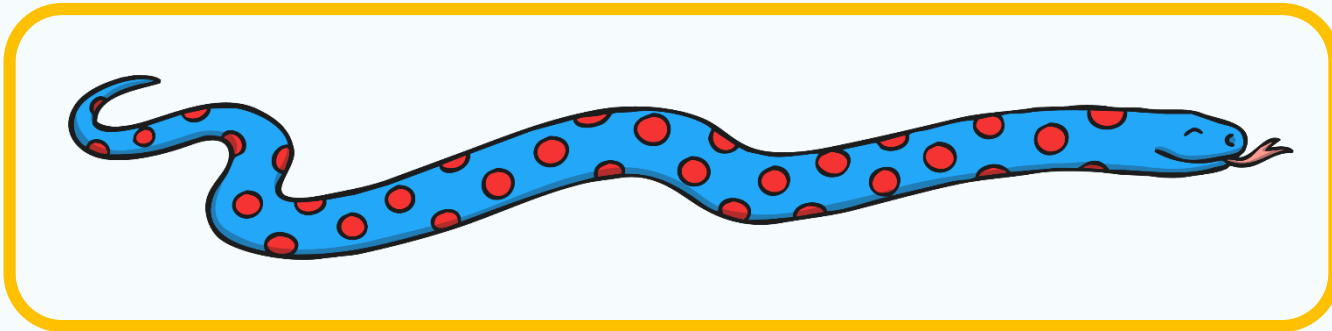


Measurement

Warm-Up

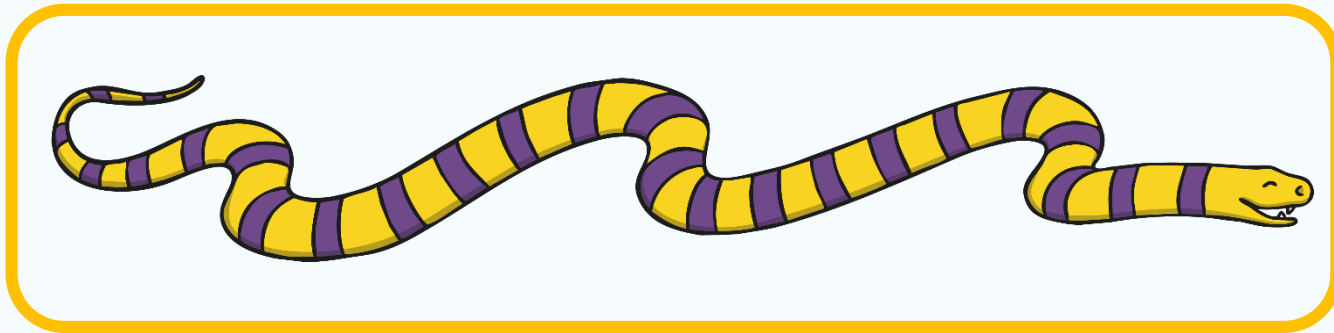


Which snake is longer?



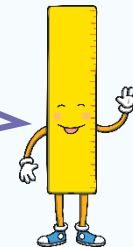
Show answer

Which snake is longer?

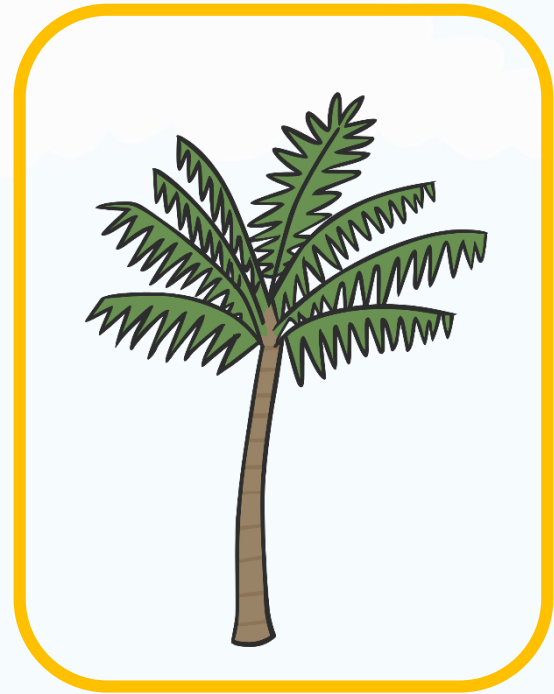
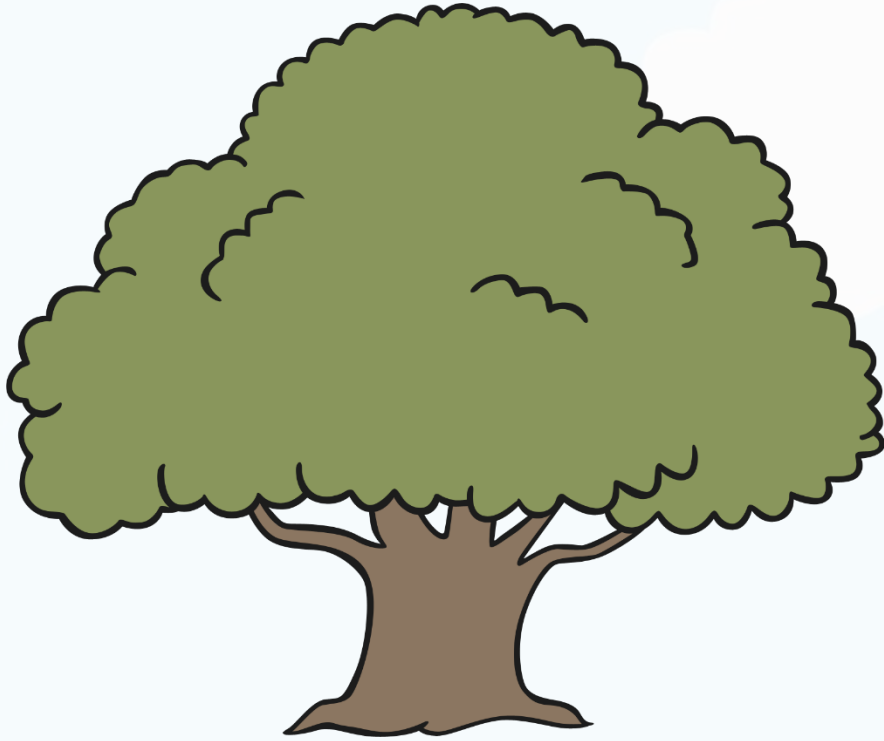


Show answer

How do you know?

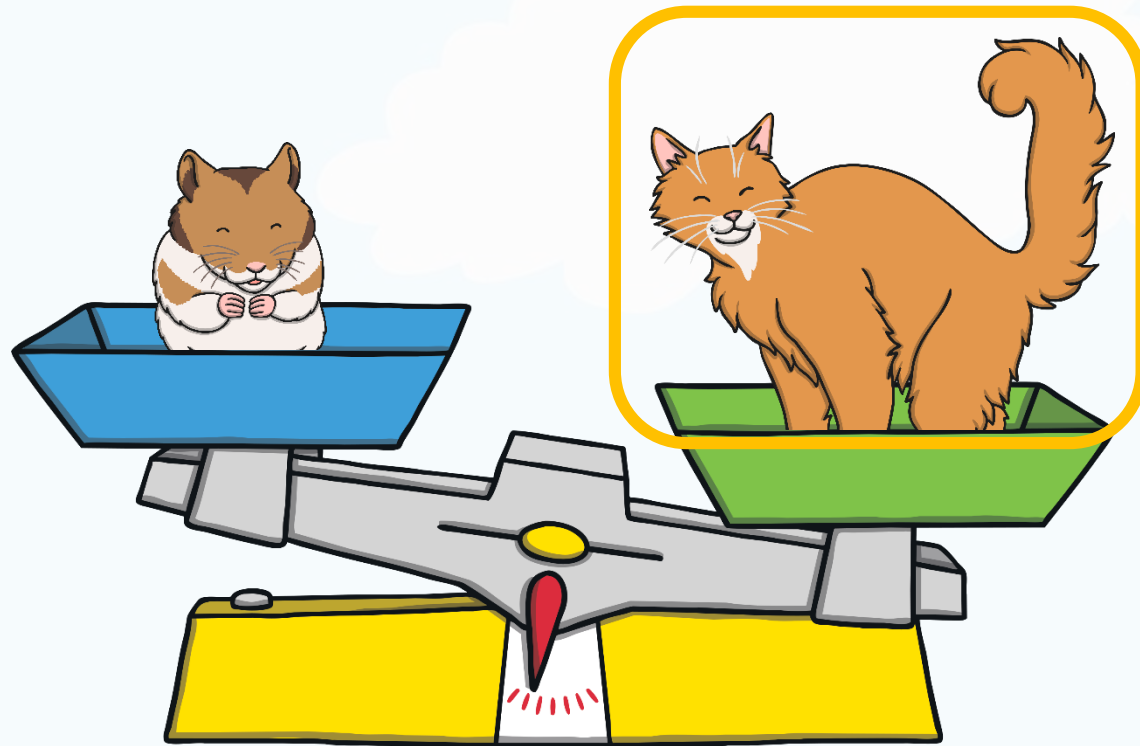


Which tree is shorter?



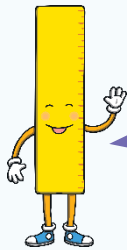
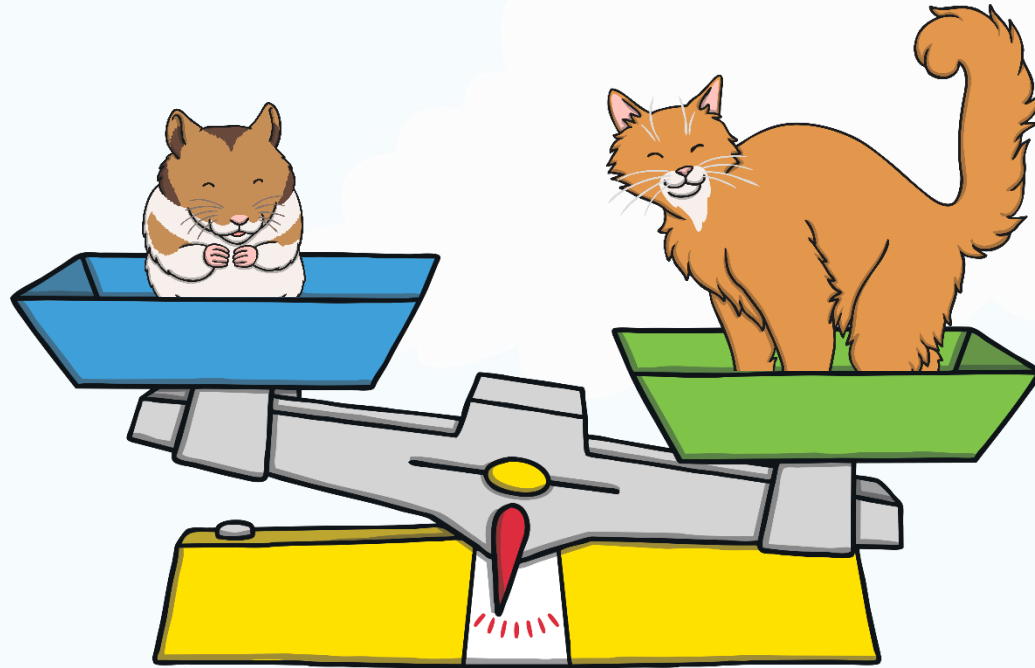
Show answer

Which pet is heavier?



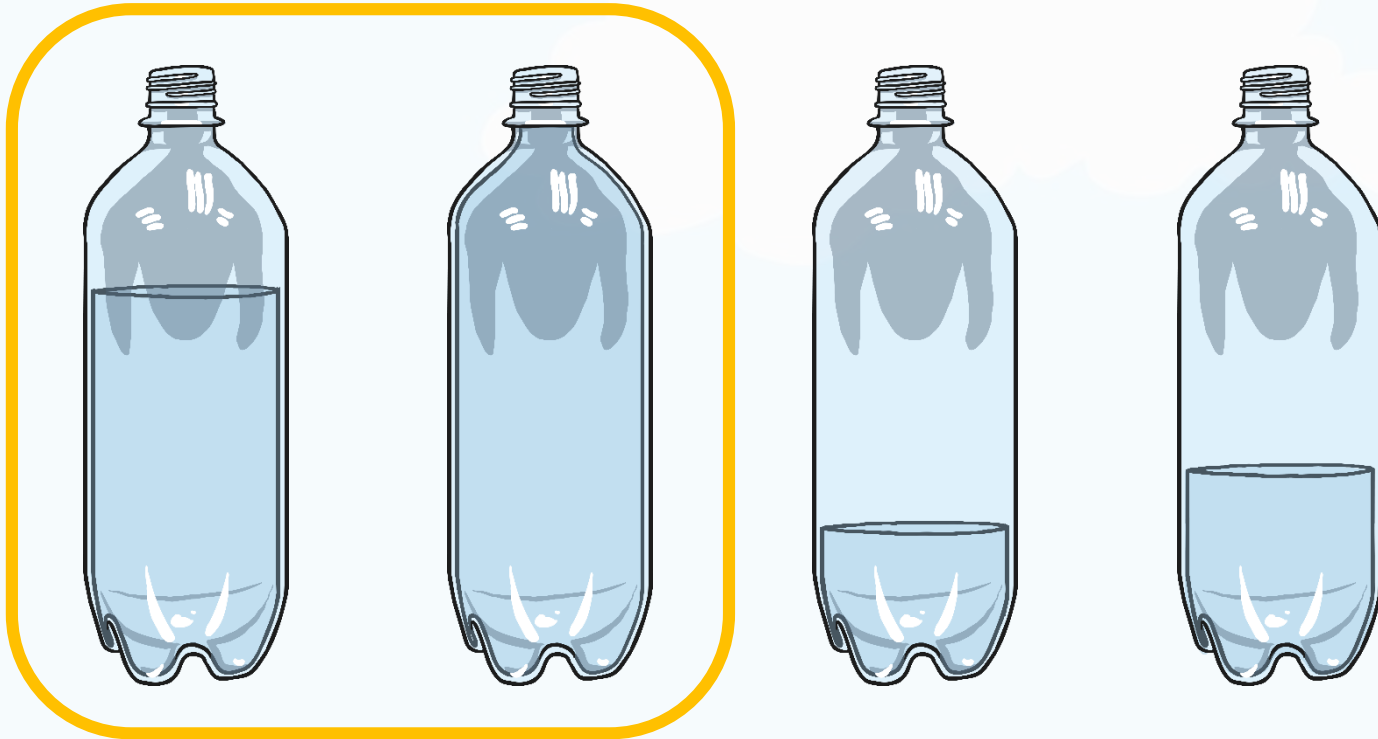
Show answer

What would happen?



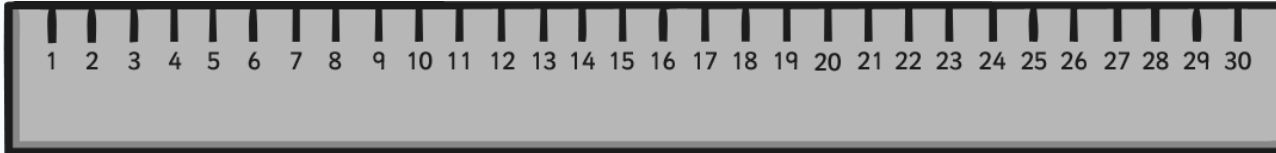
What would happen to the scales if you added another hamster?

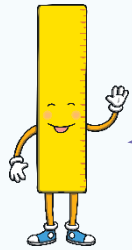
Two of the bottles are more than half full.
Which ones?



Show answer

A ruler is 30cm long. Can you find something that is shorter than a ruler?

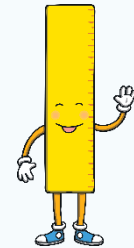




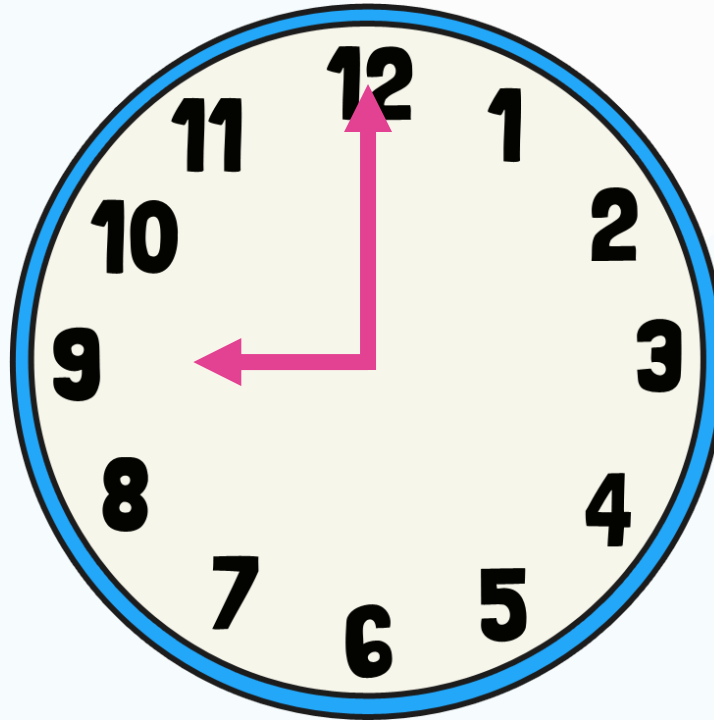
What day of the week is it today?



What day is it tomorrow?



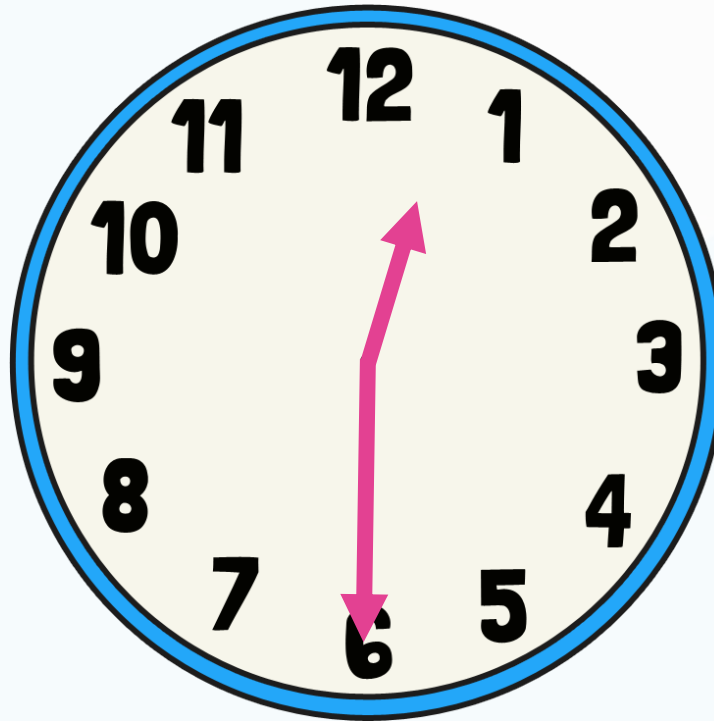
What time does the clock show?



Show answer

9 o'clock

What time does the clock show?



Show answer

half past 12

Evie left school at 3 o'clock.
It took her half an hour to walk home.
What time did she get home?



Show answer

half past 3

Which times are longer than one day?

1 second

1 year

1 minute

1 hour

1 month

1 week

Show answers

Tomek buys an ice cream sundae for 10p.
He pays for it with a 20p coin.
How much change does he get?



10p

Show answer

Mali has 10p in her purse.
Which coins might she have?



Show answers

